

# For Sale 2.0+ ACRES Veterans Memorial

## SOUTH OF ANTOINE AND NORTH OF NORTH BELT

### SIZE

2.0046 Acres (87,319sf)

### ASKING PRICE::

\$4.50 PSF

### LOCATION

West Line of Veterans Memorial just south of Antoine and north of North Belt

Key Map 371K

### FRONTAGE

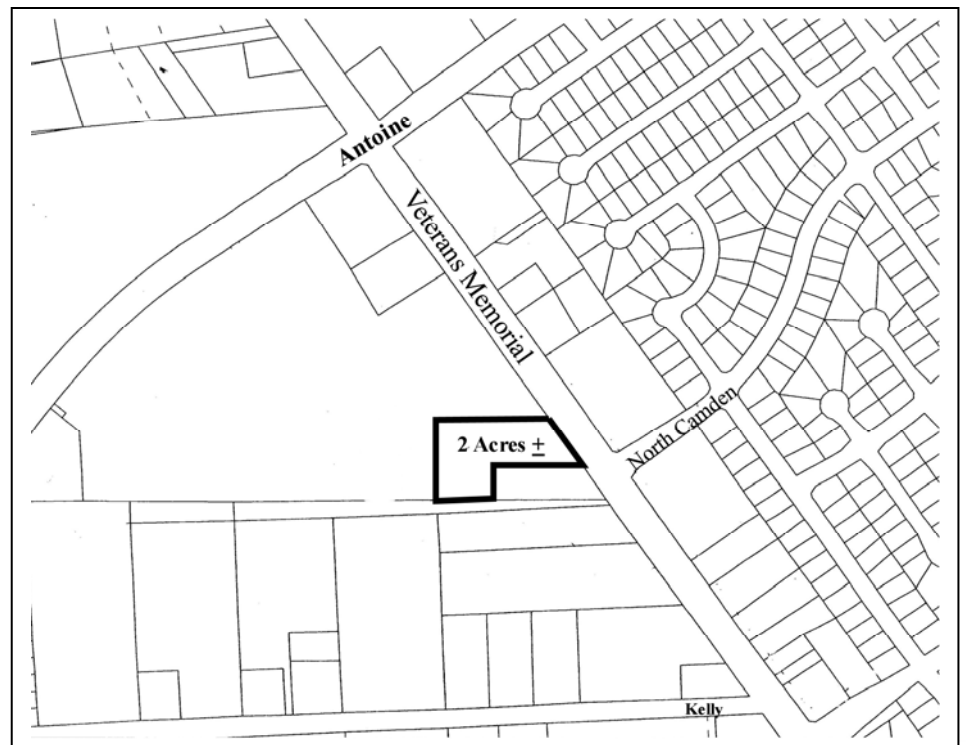
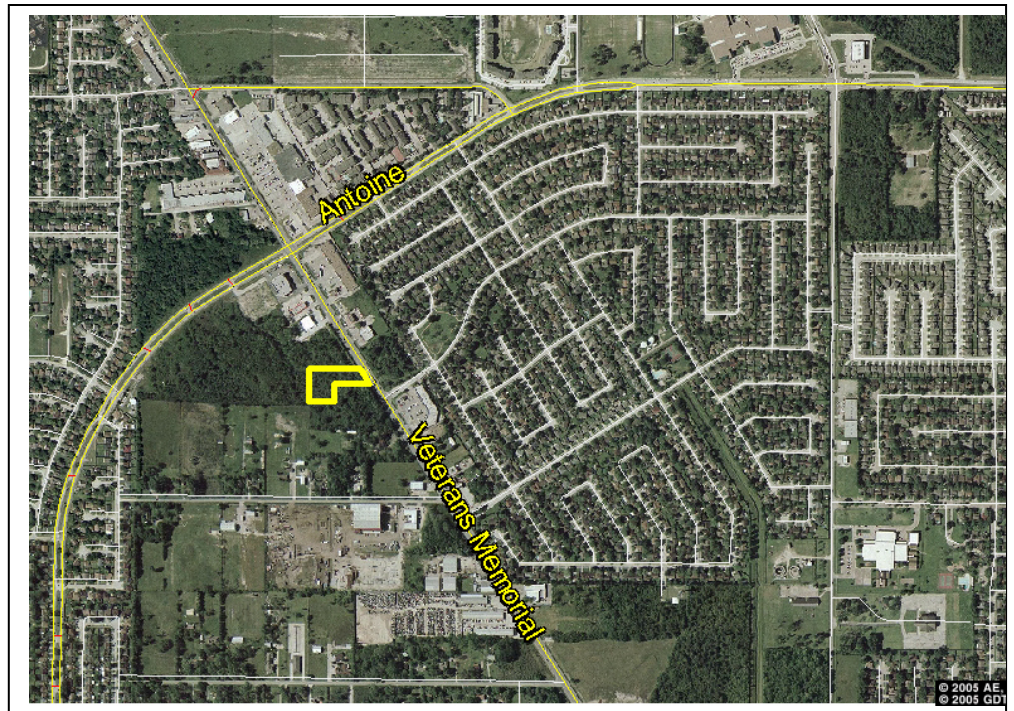
± 166' on Veterans Memorial

### EST. TRAFFIC COUNT

± 30,000 cars per day

### GENERAL INFORMATION

Property is being annexed into Harris County MUD #150 Owner will build to suit for credit worthy tenant. The property is not in 100 year flood plain. Napa Auto Parts building new store on south side of Tract, cross access provided over Napa Auto Parts tract. Traffic signal to be installed at North Camden.



*For Information Contact:*

**Tom Bell**

tbell@reliantcommercial.com

OR

**Steve Jarnigan**

Jarnigan@reliantcommercial.com

**713-974-7575**

**FAX 713-975-0876**

**www.reliantcommercial.com**



**RELIANT COMMERCIAL**

REAL ESTATE SERVICES

1800 St. James, Suite 450 \* Houston, Texas 77056

Information contained herein has, we believe, been obtained from reasonable reliable sources and we have no reason to doubt the accuracy of such information; however, no warranty or guarantee, either expressed or implied, is made with respect to the accuracy thereof. All such information is submitted subject to error, omissions or changes in conditions, prior to sale, lease or withdrawal without notice. All information contained herein should be verified to the satisfaction of the person relying there.