

21.69 Acres

I-45 NORTH - SOUTH OF SPRING CYPRESS

SIZE

21.69 +/- Acres

ASKING PRICE:

\$6.50 PSF
(\$6,141,000)

LOCATION:

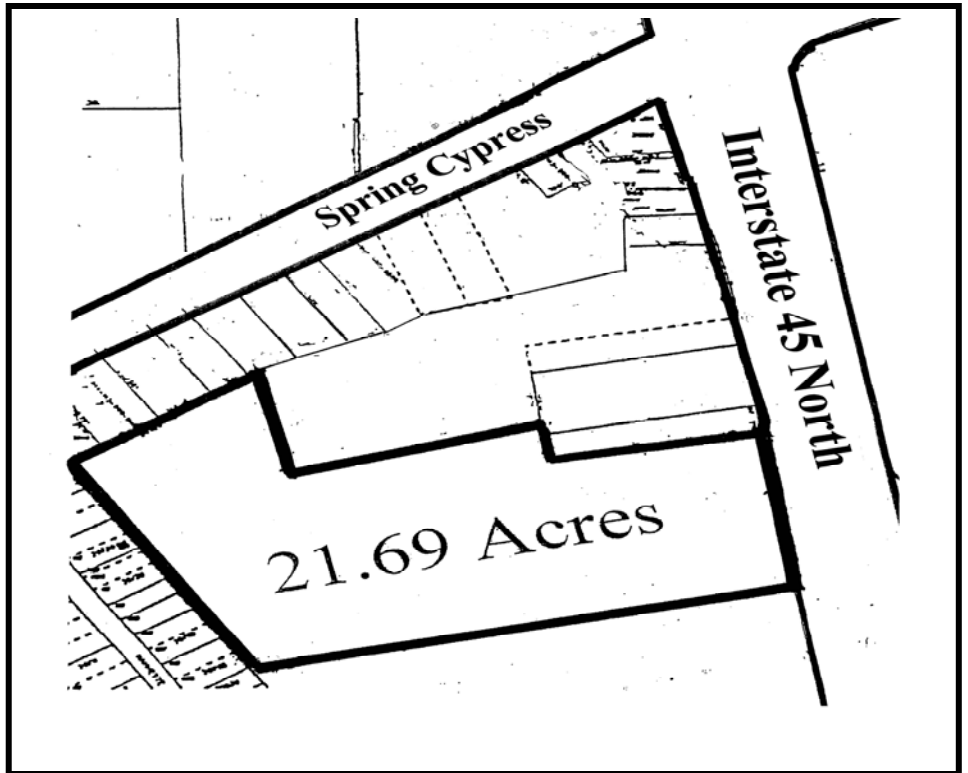
West line of I-45 North
frontage road just south of
Spring Cypress Road
Key Map 332B

DIMENSIONS:

+/- 518' on I-45 frontage road

GENERAL INFORMATION

Excellent site for car
dealership, multi-family, retail
or other uses requiring easy
access and great visibility.
Utilities provided by Spring
West MUD. Not in 100 year
flood plain..



For Information Contact:

Tom Bell

tbell@reliantcommercial.com

OR

Steve Jarnigan

Jarnigan@reliantcommercial.com

713-974-7575

FAX 713-975-0876

www.reliantcommercial.com



RELIANT COMMERCIAL
REAL ESTATE SERVICES

1800 St. James, Suite 450 * Houston, Texas 77056

The information contained herein has, we believe, been obtained from reasonable reliable sources and we have no reason to doubt the accuracy of such information; however, no warranty or guarantee, either expressed or implied, is made with respect to the accuracy thereof. All such information is submitted subject to error, omissions or changes in conditions, prior to sale, lease or withdrawal without notice. All information contained herein should be verified to the satisfaction of the person relying there.