

6003 Murphy Avenue 2.483 ACRES WEST OF MYKAWA ROAD AND SOUTH OF LOOP 610 - SOUTH

SIZE:

2.483 Acres

ASKING PRICE:

\$550,000

LOCATION:

Tract sits on north line of Murphy Avenue just west of Mykawa Road and south of Loop 610.

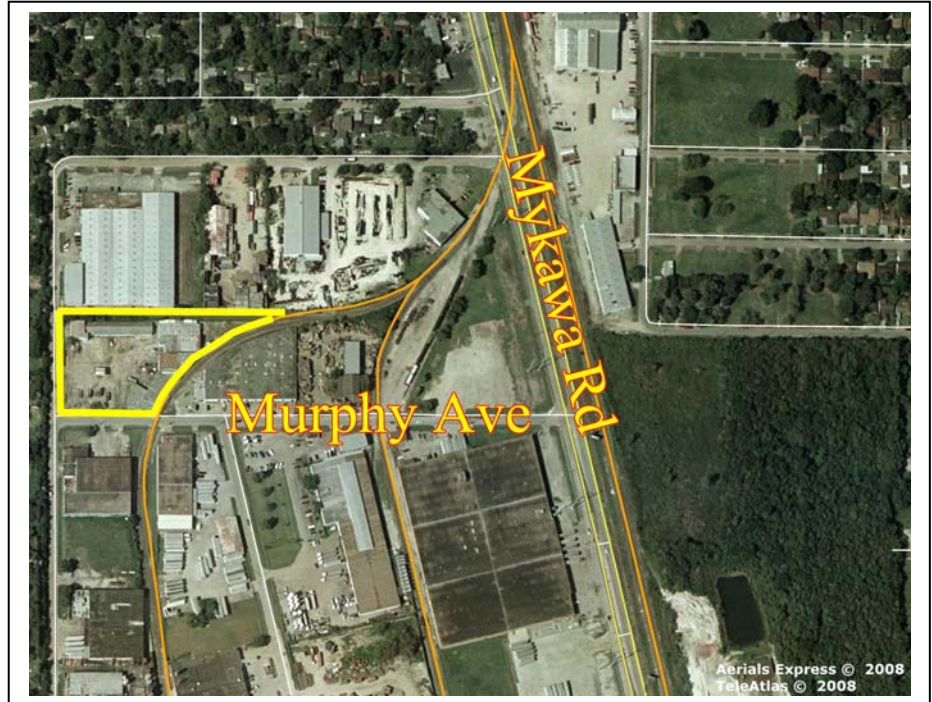
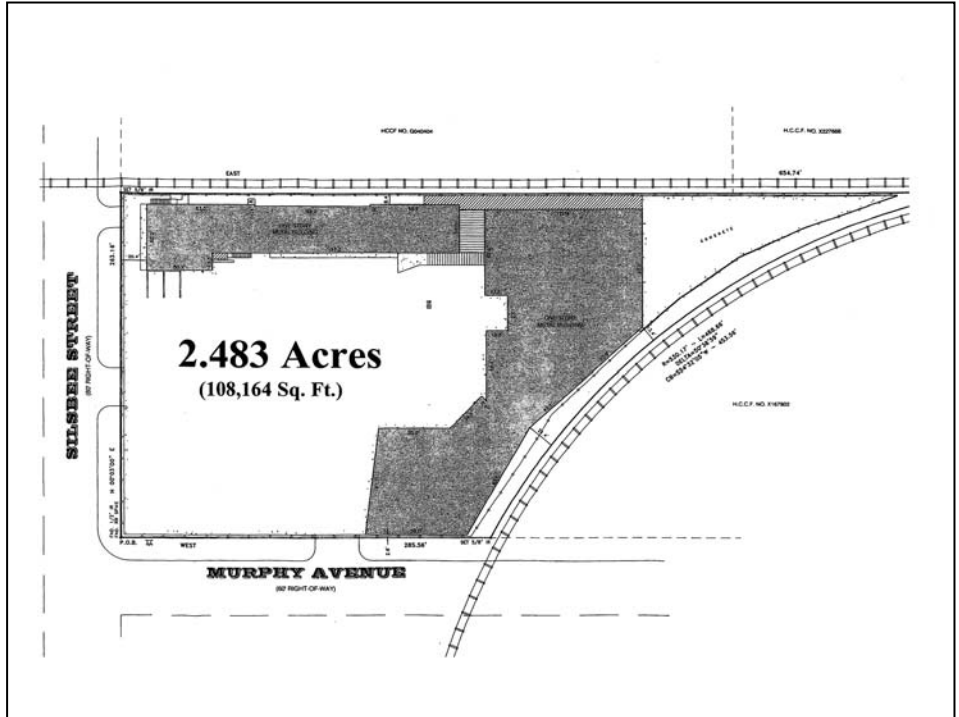
Key Map 534P

DIMENSIONS:

- ± 285' Murphy Avenue
- ± 263' Silsbee
- ± 655' BNSF rail spur

GENERAL INFORMATION:

Property has been priced on the value of the land, paving and rail spur, Rail spur is served by BNSF railroad. Majority of the property is concrete paved. There are 3 metallic buildings on the site which were built in the 60's and 70's and have limited value based on their physical condition



For Information Contact:
Reliant Commercial
www.reliantcommercial.com

Tom Bell
OR
Steve Jarnigan

713-974-7575

FAX 713-975-0876



RELIANT COMMERCIAL
REAL ESTATE SERVICES

1800 St. James, Suite 450 * Houston, Texas 77056

The information contained herein has, we believe, been obtained from reasonable reliable sources and we have no reason to doubt the accuracy of such information; however, no warranty or guarantee, either expressed or implied, is made with respect to the accuracy thereof. All such information is submitted subject to error, omissions or changes in conditions, prior to sale, lease or withdrawal without notice. All information contained herein should be verified to the satisfaction of the person relying there.