

# For Sale 1.63 ± ACRES

## INTERSTATE 45 – SOUTH OF SPRING CYPRESS

### SIZE:

1.63+/- Acres (71,137 sf)

### ASKING PRICE:

\$1,138,200 (\$16 psf)

### LOCATION

West line of I-45 North frontage road south of Spring Cypress and north of Louetta.

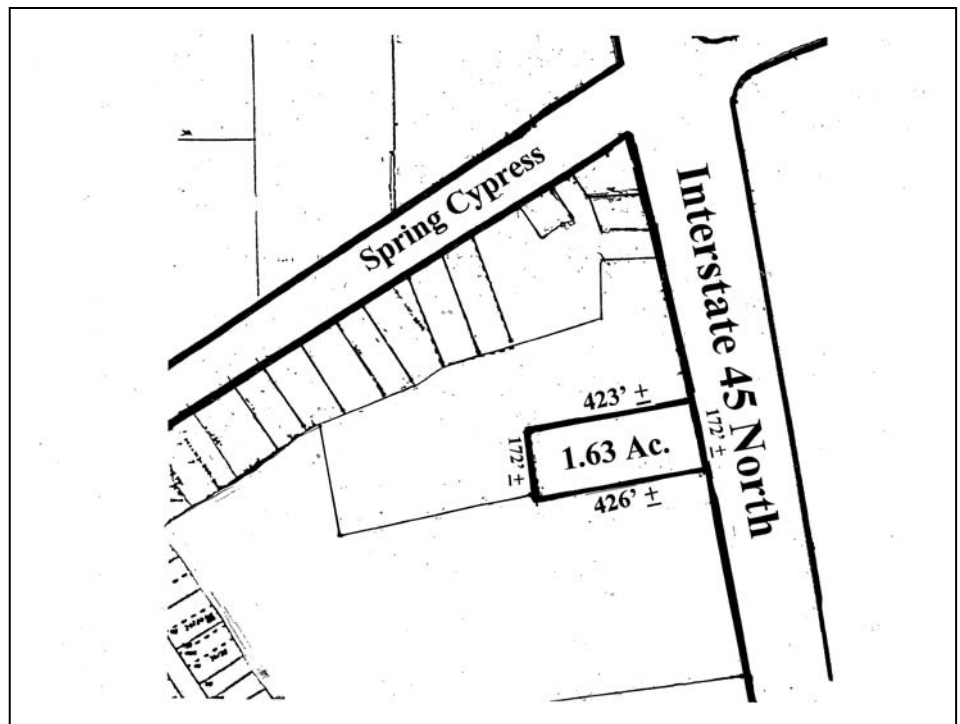
Key Map 292T

### FRONTAGE

± 172' I-45 frontage road  
± 426' of Depth

### GENERAL INFORMATION

Great retail or commercial site, ideal for motel or commercial use. Utilities provided by Spring West MUD. Property is not located in 100 year flood plain. Curb cuts in place. Property currently in use as auto salvage yard.



For Information Contact:  
**Reliant Commercial**  
[www.reliantcommercial.com](http://www.reliantcommercial.com)

Tom Bell  
OR

Steve Jarnigan

713-974-7575

FAX 713-975-0876

 **RELIANT COMMERCIAL**  
REAL ESTATE SERVICES

1800 St. James Pl. Suite 450 \* Houston, Texas 77056

The information contained herein has, we believe, been obtained from reasonable reliable sources and we have no reason to doubt the accuracy of such information; however, no warranty or guarantee, either expressed or implied, is made with respect to the accuracy thereof. All such information is submitted subject to error, omissions or changes in conditions, prior to sale, lease or withdrawal without notice. All information contained herein should be verified to the satisfaction of the person relying there.