

.2168 Acres (9,444 sf)

LEASE RATE:

\$60,000 Per Year
(Short or Long Term
Lease Available)

LOCATION

SEC of Richmond Ave
& Dunlavy

Key Map 492Z

FRONTAGE

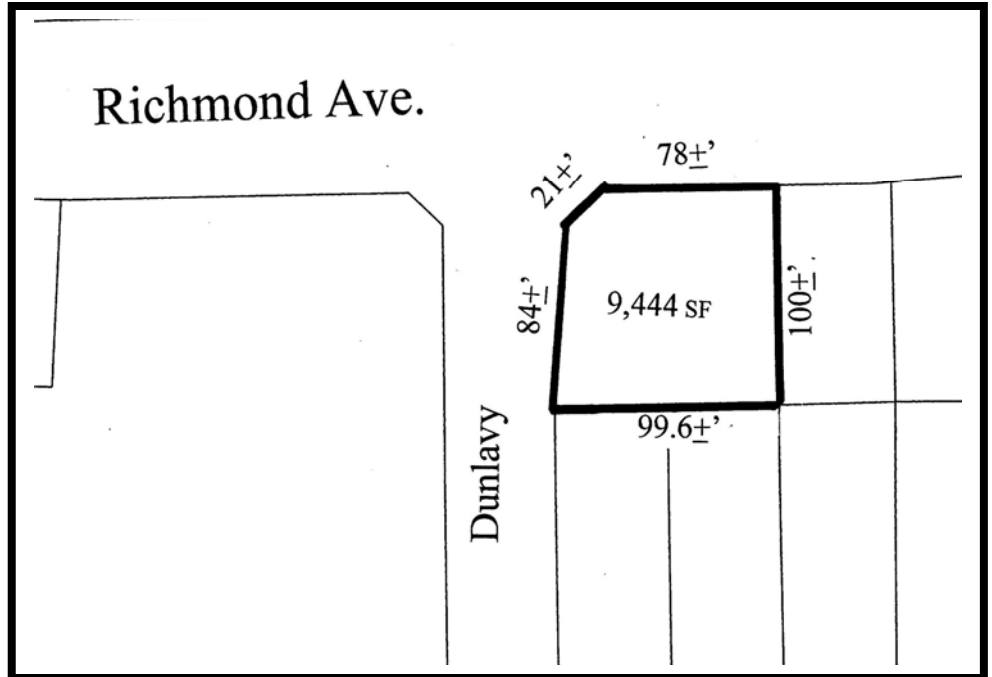
+ 99' on Richmond
± 84' on Dunlavy

EST. TRAFFIC COUNT

± 30,000 cars per day

GENERAL INFORMATION

Owner is not interested in
selling property, will only
lease or build to suit. The
property is not in 100 year
flood plain.



RELIANT COMMERCIAL
REAL ESTATE SERVICES

3033 Chimney Rock, Suite 355 * Houston, Texas 77056

The information contained herein has, we believe, been obtained from reasonable reliable sources and we have no reason to doubt the accuracy of such information; however, no warranty or guarantee, either expressed or implied, is made with respect to the accuracy thereof. All such information is submitted subject to error, omissions or changes in conditions, prior to sale, lease or withdrawal without notice. All information contained herein should be verified to the satisfaction of the person relying there.

3033 Chimney Rock, Suite 355 * Houston, Texas 77056

All information contained herein has, we believe, been obtained from reasonable reliable sources and we have no reason to doubt the accuracy of such information; however, no warranty or guarantee, either expressed or implied, is made with respect to the accuracy thereof. All such information is submitted subject to error, omissions or changes in conditions, prior to sale, lease or withdrawal without notice. All information contained herein should be verified to the satisfaction of the person relying there.