

For Sale 3.459 Acres

WILCREST – SOUTH OF WESTPARK

SIZE:

3.459 Acres

ASKING PRICE:

\$2,560,000 (\$17.00 psf)

LOCATION

West line of Wilcrest south of Westpark and north of Westpark Tollway

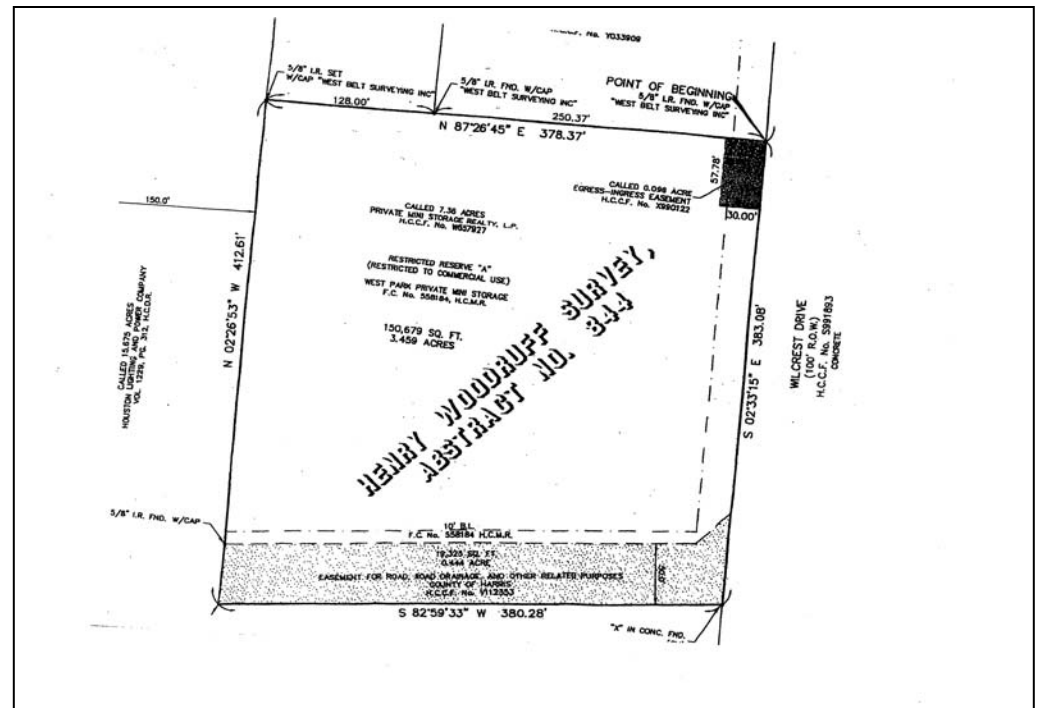
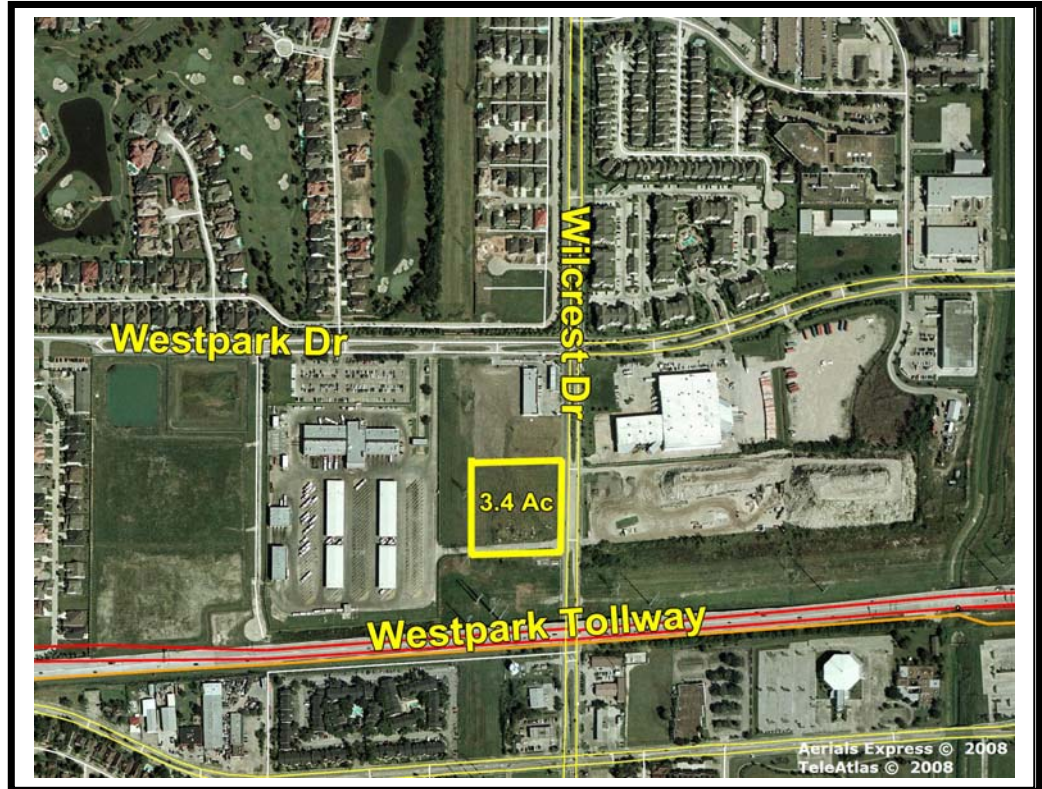
Key Map 529B

FRONTAGE

± 383' on Wilcrest
± 378' of Depth

GENERAL INFORMATION

Great commercial site, ideal for office, hotel/motel medical professional, or retail use.. Property is not in 100 year flood plain. Seller has current survey and phase one for tract. Utilities by Harris County MUD 372, Seller will sub-divide, price will be determined by configuration and location.



For Information Contact:
Reliant Commercial
www.reliantcommercial.com

Tom Bell
OR

Steve Jarnigan

713-974-7575
FAX 713-975-0876



RELIANT COMMERCIAL
REAL ESTATE SERVICES

1800 St. James Pl. Suite 450 * Houston, Texas 77056

The information contained herein has, we believe, been obtained from reasonable reliable sources and we have no reason to doubt the accuracy of such information; however, no warranty or guarantee, either expressed or implied, is made with respect to the accuracy thereof. All such information is submitted subject to error, omissions or changes in conditions, prior to sale, lease or withdrawal without notice. All information contained herein should be verified to the satisfaction of the person relying there.