

8.35 Acres Medical Complex Blvd.- Tomball

JUST WEST OF S.H. 249 - BYPASS (TOMBALL PARKWAY)

SIZE

8.35 +/- Acres

LOCATION

North line of Medical Complex Blvd. just west of the new SH 249 Bypass and immediately behind the new Tomball Marketplace shopping center.

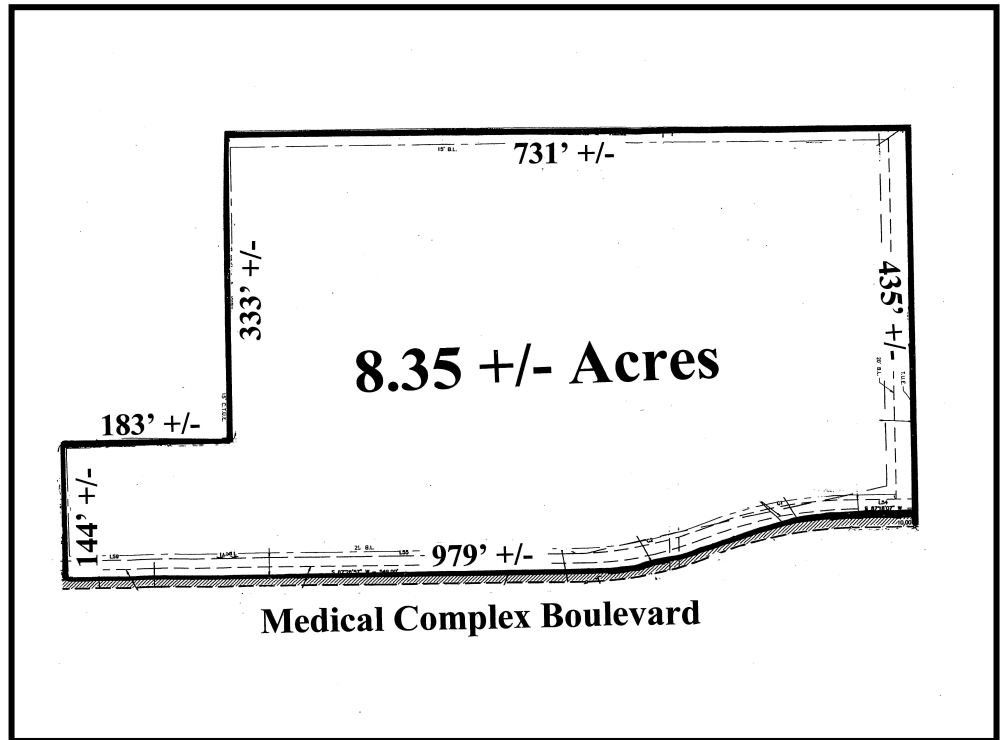
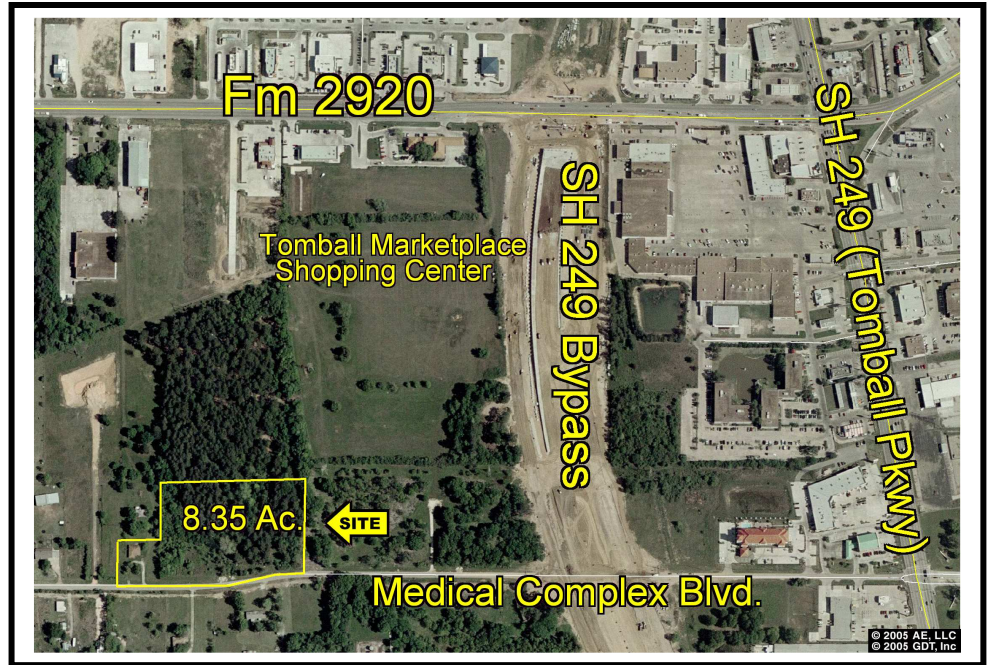
Key Map 288K

DIMENSIONS

+/- 979' on Medical Complex Blvd.
 +/- 435 feet of depth

GENERAL INFORMATION

Close proximity to Central Tomball and Tomball Medical Center. Tract is platted and ready for development. City of Tomball Utilities in place. No detention is required. Not in 100 year flood plain. Site is south of the new Weingarten Realty Tomball Market shopping center.



For Information Contact:

Tom Bell

tbell@reliantcommercial.com

OR

Steve Jarnigan

Jarnigan@reliantcommercial.com

713-974-7575

FAX 713-975-0876

www.reliantcommercial.com



RELIANT COMMERCIAL
 REAL ESTATE SERVICES

1800 St. James, Suite 450 * Houston, Texas 77056

Information contained herein has, we believe, been obtained from reasonable reliable sources and we have no reason to doubt the accuracy of such information; however, no warranty or guarantee, either expressed or implied, is made with respect to the accuracy thereof. All such information is submitted subject to error, omissions or changes in conditions, prior to sale, lease or withdrawal without notice. All information contained herein should be verified to the satisfaction of the person relying there.