

# For Sale 40, 679 Sq.Ft. (.936 acres) I-45 NORTH – SOUTH OF SPRING CYPRESS/FM2920

## SIZE:

40,679 sf (.936 acres)

## ASKING PRICE:

\$813,600 (\$20.00 psf)

## LOCATION

West line of I-45 North frontage road south of Spring Cypress and north of Louetta

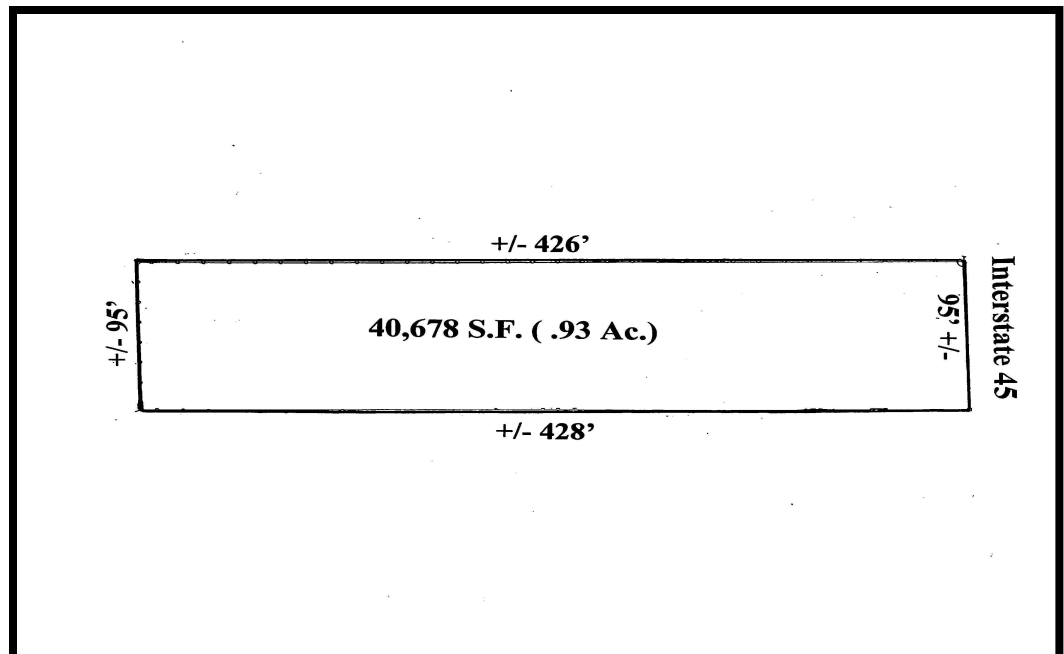
Key Map 292T

## FRONTAGE

95' +/- Interstate 45  
426' +/- of Depth

## GENERAL INFORMATION

Great retail or commercial site, ideal for motel. Utilities provided by Spring West MUD. Property is not in 100 year flood plain. Seller has current survey and phase one for tract. Curb cut in place on I-45 frontage road



For Information Contact:  
**Reliant Commercial**  
[www.reliantcommercial.com](http://www.reliantcommercial.com)

**Tom Bell**  
OR

**Steve Jarnigan**

**713-974-7575**

**FAX 713-975-0876**



**RELIANT COMMERCIAL**  
REAL ESTATE SERVICES

1800 St. James Pl. Suite 450 \* Houston, Texas 77056

The information contained herein has, we believe, been obtained from reasonable reliable sources and we have no reason to doubt the accuracy of such information; however, no warranty or guarantee, either expressed or implied, is made with respect to the accuracy thereof. All such information is submitted subject to error, omissions or changes in conditions, prior to sale, lease or withdrawal without notice. All information contained herein should be verified to the satisfaction of the person relying there.