

4.2 ACRES

FRY ROAD SOUTH OF CLAY ROAD.

SIZE:

4.2 +/- Acres

ASKING PRICE:

\$900,000 (\$4.92 psf)

LOCATION:

Tract sits on east line of Fry Road just south of Westfield Parkway.

Key Map 446L

TRAFFIC COUNT:

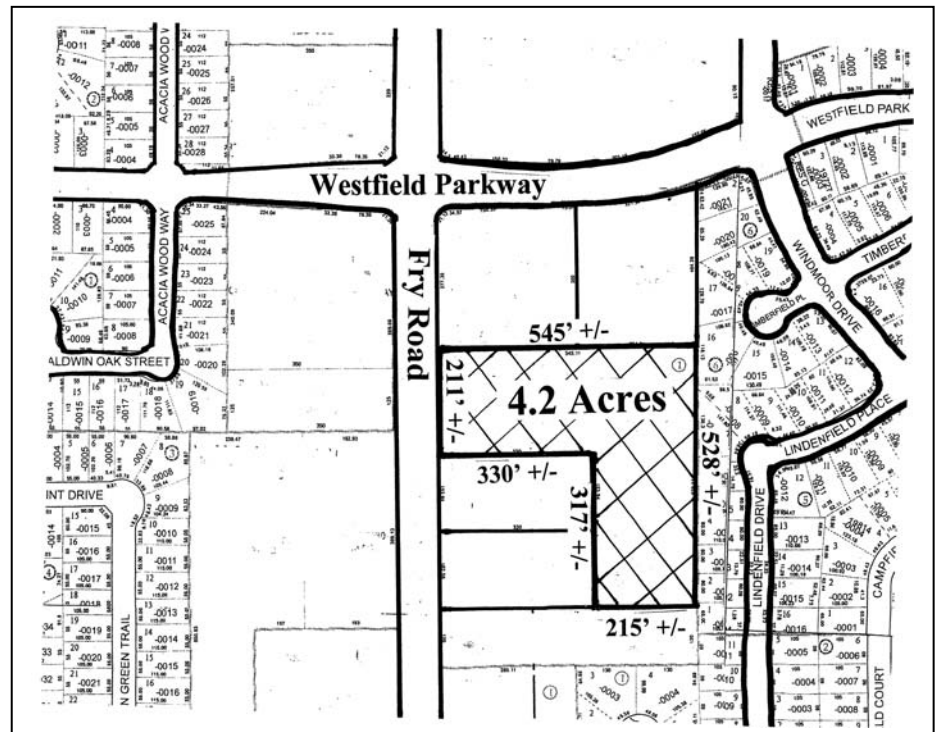
Fry Road 44,000± vpd

FRONTAGE:

± 212' Fry Road
± 545' Depth

GENERAL INFORMATION:

Great commercial tract on Fry Road south of Clay. Good for retail, office-warehouse, mini-storage. Utilities provided by Ricewood MUD Property does not lie in 100 year flood plain. Seller will sub-divide but price will be determined by size and configuration. Reciprocal Access Easements in place see attached conceptual development plan for locations of cross access points.



For Information Contact:
Reliant Commercial
www.reliantcommercial.com

Tom Bell
OR
Steve Jarnigan

713-974-7575

FAX 713-975-0876



RELIANT COMMERCIAL
REAL ESTATE SERVICES

1800 St. James Place, Suite 450 – Houston, Texas 77056

Cross Access Points

