

For Sale 4.97+ ACRES BAMMEL NORTH HOUSTON

SIZE:

4.97+ Acres

216,663 square feet

LOCATION:

East line of Bammel N Houston, north of Kleinmeadow Drive and south of Champion Forest and W. Richey

Key Map 371J

FRONTAGE:

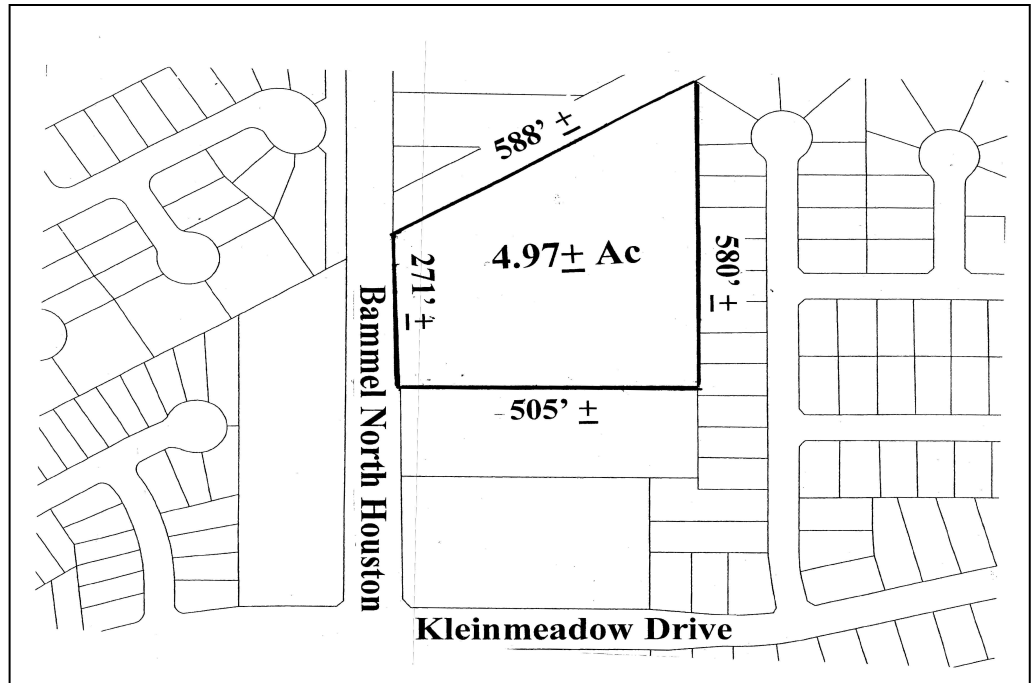
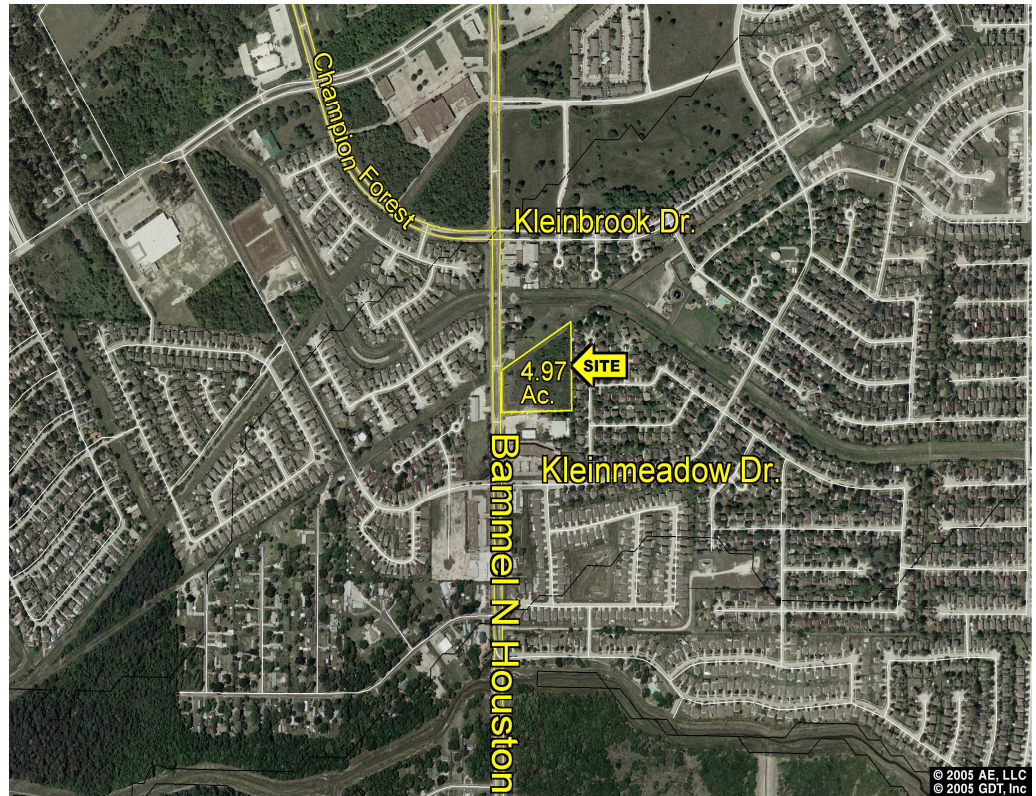
± 271' on Bammel N Houston
± 505' of Depth

TRAFFIC COUNT:

24,760 vpd - 2006

GENERAL INFORMATION

Great commercial site. Bammel North Houston is a high traffic north/south artery between Beltway and FM 1960, approximately 25,000+ vehicles per day. Property located in the Harris County MUD 180. Property is not located in the 100 year flood plain according to TSARP map.



For Information Contact:

Reliant Commercial

www.reliantcommercial.com

Tom Bell

OR

Steve Jarnigan

713-974-7575

FAX 713-975-0876



RELIANT COMMERCIAL
REAL ESTATE SERVICES

The information contained herein has, we believe, been obtained from reasonable reliable sources and we have no reason to doubt the accuracy of such information; however, no warranty or guarantee, either expressed or implied, is made with respect to the accuracy thereof. All such information is submitted subject to error, omissions or changes in conditions, prior to sale, lease or withdrawal without notice. All information contained herein should be verified to the satisfaction of the person relying there.

